

The following poem is from Yamijishi no Sanpo by Toshio Mae

Published by NHK

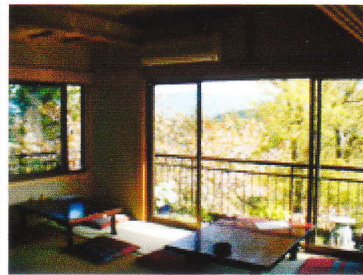
Mikumano no
Hatsune no chaya no
Kuzukiri o
Mimeuruwashiki
Hito hakobi

In Mikumano
At the Hatsune tea house
The Kuzu noodles
Are brought over to me by
A beautiful woman

Jumei Nakamitsu



Cherry blossoms from
inside the restaurant



Cherry blossoms from
inside the restaurant



View from upstairs

Hours: 1000 - 1900 (extended for bookings)
or November).

Holiday: No specific days (but no holidays in April

[TOP PAGE](#)

[Hatsune](#)

[Menus](#)

[Restaurant guide](#)

[Map](#)

[Booking](#)



HATSUNE
Seasonal Food